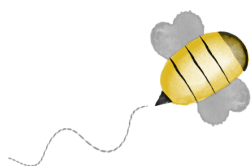


# BEE-UTIFUL QUILT-A-LONG

by Pamela Morgan  
of Sweet Little Stitches  
for Moda Bake Shop



## BLOCK 14 - BEE GOOD

All steps use 3 strands of floss unless otherwise specified.

Stitches are denoted in *italics*. Colors of thread are in ALL CAPS.

### INGREDIENTS

- 10 ½" Square Background Fabric
- Various shades of six-strand embroidery floss
- 4" or 5" Embroidery Hoop
- Hand Embroidery Needles
- Frixion or other erasable thin-lined fabric pen

Step 1: Trace block design on to background fabric using desired method.

Step 2: *Backstitch* the outline of the honey pot, its lid, and the hive on the pot using a **LIGHT BROWN** floss.

Step 3: Outline the honey dipper using a backstitch done in **MEDIUM BEIGE** floss.

Step 4: With **DARK BROWN** floss, *backstitch* the word honey and the table the honeypot is resting on.

Step 5: *Backstitch* the drop of honey with **GOLD-EN YELLOW** floss. Using the same floss, *satin stitch* the diamond in the center of the O in honey, and the bees' bodies. Then stitch the flower petals using a *lazy daisy stitch*.

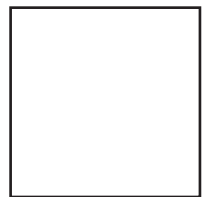
Step 6: Use **DARK BROWN** floss to complete the center of the flowers using a *french knot*.

Step 7: With **BLACK** floss, *satin stitch* the bees' heads, stripes, and stingers. Use a *backstitch* for the bee's legs.

Step 8: *Backstitch* the bees' wings with **LIGHT GRAY** floss.

Step 9: Use a *running stitch* done with **VERY LIGHT GRAY** floss for the bee's flight path.

Step 10: Remove block from hoop and press with hot iron under pressing cloth or fluffy towel. Trim to 8 ½" square. If desired, machine topstitch a scant 1/8" around all sides to keep from unraveling while working on other blocks.



1 INCH  
Do not print to  
scale.