

 **EASY**

Another choice awaits you--will you take the detour over Bow Tie Bridge? These bow tie blocks are the optional cornerstone blocks for this round. Whether to add cornerstone blocks is completely up to you--choose what works best for your quilt!

NOTE: This is one post in a series of quilt-along posts. Start from the beginning with the first post [here](#).

Each block requires two fabrics (Fabric A and background) and finishes at 4" square (4.5" unfinished).



INGREDIENTS

Makes four cornerstone blocks

Fabric A:

- [8] 2.5" by 2.5" squares
- [8] 1.5" by 1.5" squares

Background Fabric:

- [8] 2.5" by 2.5" squares

INSTRUCTIONS

Assembling the Block

First, we will create the Easy Corner Triangles (ECTs)

1. Draw a line on the diagonal of the wrong side of (8) 1.5" squares (Fabric A). Place 1.5" square in the bottom left corner of a background square with the diagonal line going from upper left to lower right, as shown.
2. Sew on the line.
3. Trim the corner, leaving a 1/4" seam allowance, as shown.
4. Press unit open (toward Fabric A)

Repeat to create a total of 8 units.

To assemble the block, join the four 2.5" units as shown below.

Repeat to make a total of four cornerstone blocks.

YIELD



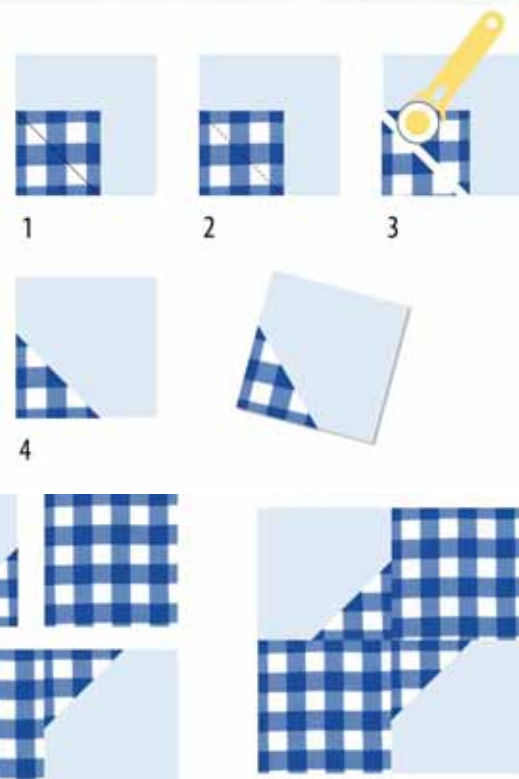
The Bow Tie Bridge block finishes at 4" square (measures 4.5" square unfinished).

Kristin Esser

[blog: [Simple. Handmade. Everyday.](#)]

[instagram: [@kristin_esser](#)]

[facebook: [Simple. Handmade. Everyday.](#)]



7/19/2018

Original Recipe can be found at www.modabakeshop.com

Recipes are sometimes altered to correct errors. Please ensure that you have downloaded the most recent Printer Friendly Version before starting your project. If you find a mistake in this pattern, please contact modabakeshop@unitednotions.com.

This is an original pattern not intended for sale.