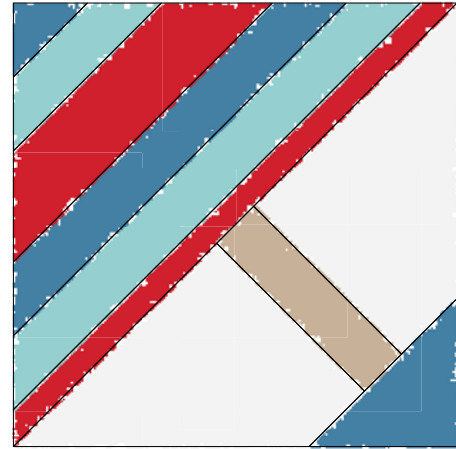
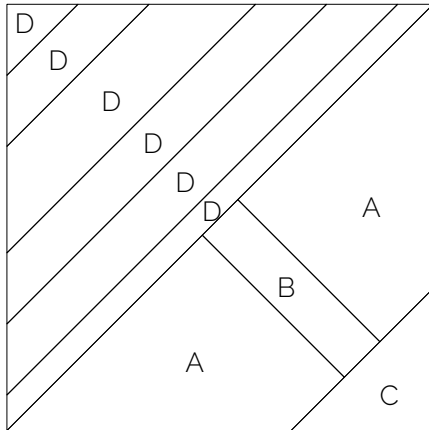


DIMENSIONS: 12" SQUARE FINISHED



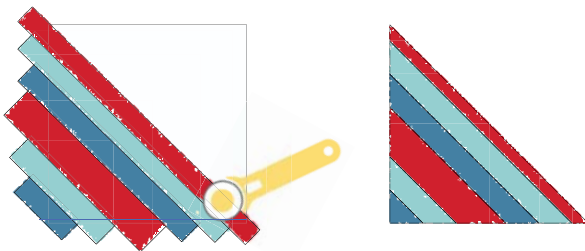
INGREDIENTS

Fabric A	(1) 9" square subcut into 2 triangles
Fabric B	(1) 2" x 9" rectangle
Fabric C	(1) 4" square
Fabric D	A variety of strings from 3/4" to 2" wide and long enough to cover half of the 13" foundation square
Foundation	(1) 13" square

INSTRUCTIONS

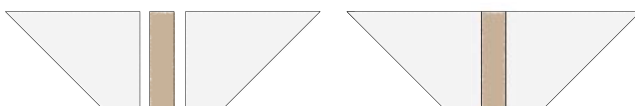
UMBRELLA TOP

- 1 Place your 13" foundation piece on your work space. Layer your "strings" on the fabric, starting on the diagonal so that you'll have a general idea of what the final result will be. Note - you only need to sew strings onto half of the foundation piece.
- 2 Sew strings onto the foundation piece, starting in the middle diagonally and going out to one corner.
- 3 After all strings are sewn, press well; cut on the diagonal and trim so that you have a 13" x 13" right angle triangle.

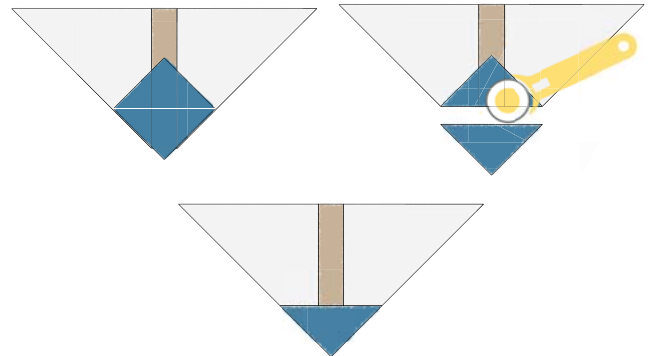


UMBRELLA POLE AND STAND

- 1 Sew the "sand" triangles to the umbrella pole as per the diagram below:



- 2 Draw a line on the diagonal of the back side of the umbrella stand piece. Place this piece on the unit you created in the previous step and sew the umbrella stand piece on the diagonal line:



- 3 Trim excess fabric from the bottom portion of the umbrella stand piece 1/4" from the seam. Open the fabric and carefully press toward the umbrella stand.
- 4 Trim piece so that you have a 13" x 13" right angle triangle.

ASSEMBLE THE BLOCK

- 1 Sew the umbrella top unit and the sand/umbrella pole/stand unit together along the longest side of the triangle.
- 2 Press seams open.
- 3 Trim block to 12 1/2" square.

